



O SON DO AR

Música: BIEITO ROMERO COPO

MODERATO
♩ = 138



C

F

Dm

C



G

Am

Dm

C

F



Dm

Bb

C

Dm

Dm S.A.

Dm

C



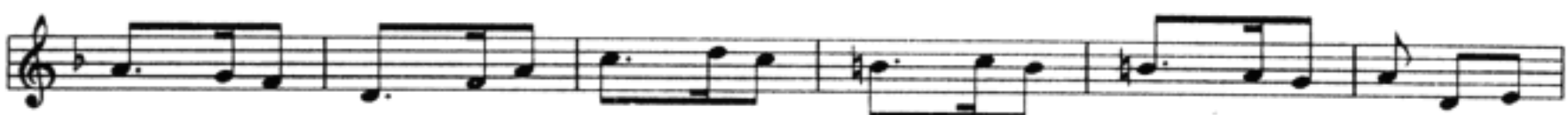
F

Dm

C

G

Am



Dm

C

F

Dm

Bb

C



Dm

Dm S.A.

Dm

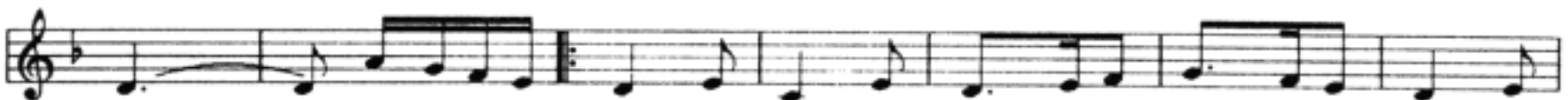
C

$\frac{C}{A}$

Dm

C

Dm



C

$\frac{C}{A}$

Dm

C

Dm

Dm

C

$\frac{C}{A}$

Dm

C



Dm

C

$\frac{C}{A}$

1a

Dm

Dm S.A.

2a

Dm

Dm S.A.

DE



HASTA
(Reptdo)
Y CODA

CODA
Dm

C

Dm

C

$\frac{C}{A}$

Dm

D4/5

Dm

